

La Nuit Du Cerf / A Deer In The Headlights

Cirque Le Roux

In case of any doubts on the possibility of performing our show in your location, please contact the Company Technical Director.

General Manager : Pierre Berneron / pierreberneron@yahoo.fr / +33(0)663001476

Logistic : Juliette Grandmottet / juliettegrandmottet@gmail.com / +33(0)630945698

Production : BlueLine production / contact@blueline.fr / www.blueline.fr / +33(0)565271515

Administration : Danaé Dugardyn / danae@cirqueleroux.com / +33(0)679840991

Set-up on the day before the performance. 10 people on tour.

STAGE

Ideal Dimensions:

- LENGTH: 12m + wings
- DEPTH : 11m
- HEIGHT : 7m to lighting pipes

The floor should be smooth and leveled (no slope). Ideally, without a dance mat. If it is a concrete floor, please contact the Company General Manager. The floor must have a strength of 500 kg / m². The location of the structure, the attachment points and legs appear on the plan attached.

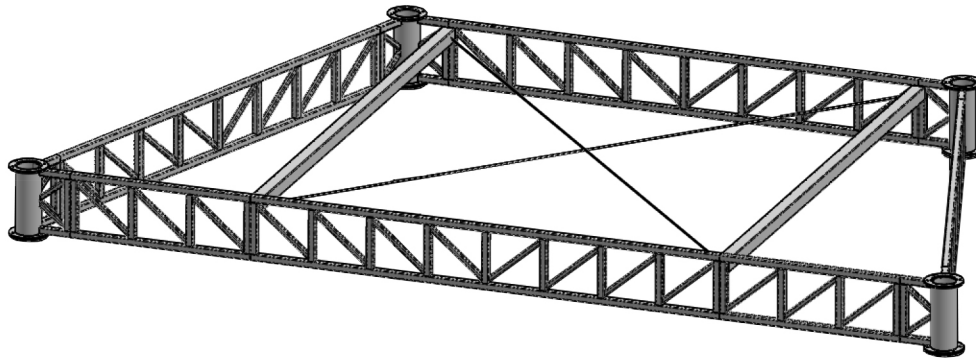
SET-UP

Our Company installs a motorized structure on stage. The set-up process is described in the following pages. Please provide 4 fixed anchoring points (500 kg) to rig our structure (in case of ballasts on pallets, they will need to be screwed into the stage or stabilize using other measures to prevent them from slipping). ☒The location of these points appears on the layout plan at the end of this technical rider but can be modified in agreement with the Company General Manager.☒These points can be: anchoring points with eyebolts, ballasts, water ton, etc ...☒Do not hesitate to contact the Company General Manager for more information. The company will supply the fittings, straps, slings, etc ... necessary for the set-up and the rigging of our structure.

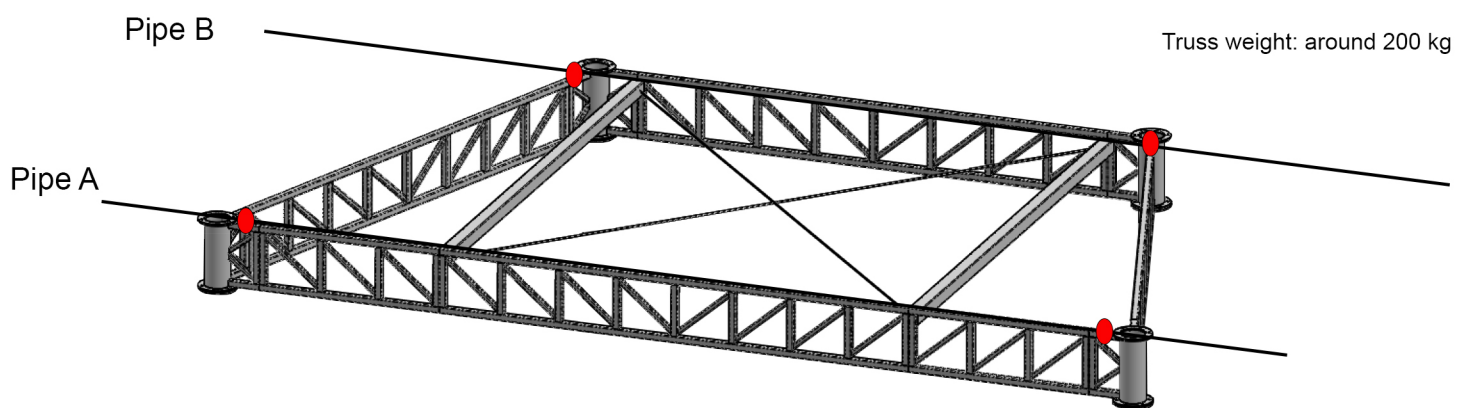
In case of counterweighted pipe grids, please provide the number of people required to lift the flies for an easy set-up (depending on the number of pipes used to lift the structure).

DETAILED SET-UP PLAN OF THE STRUCTURE

STEP 1: Set-up the structure truss on the floor

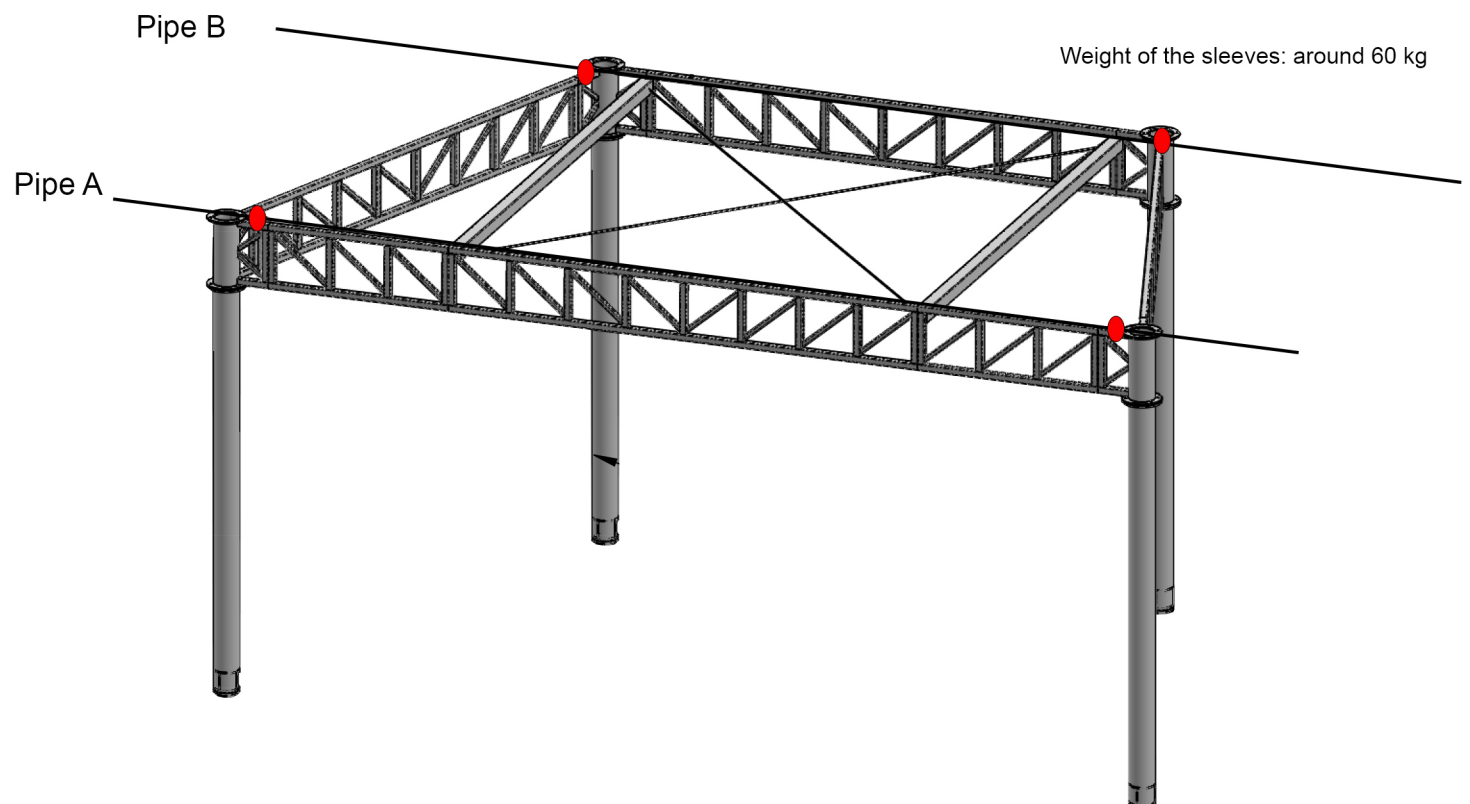


STEP 2: hang the structure truss to 2 pipes



If two pipes are not enough to bear the weight of the structure, a third pipe can be added between the A and B.

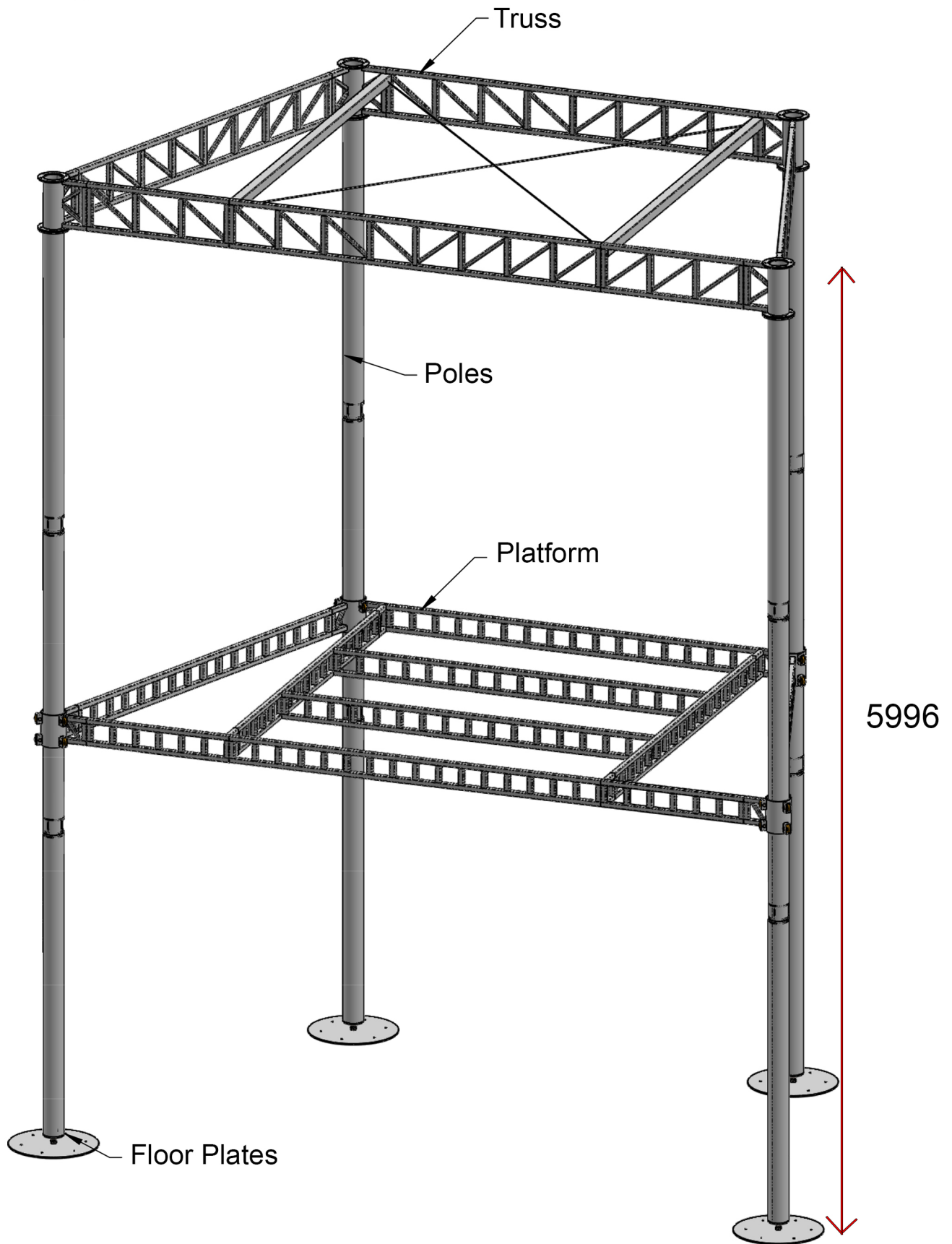
STEP 3: Lift the structure and fix the 1st sleeves of the 4 poles



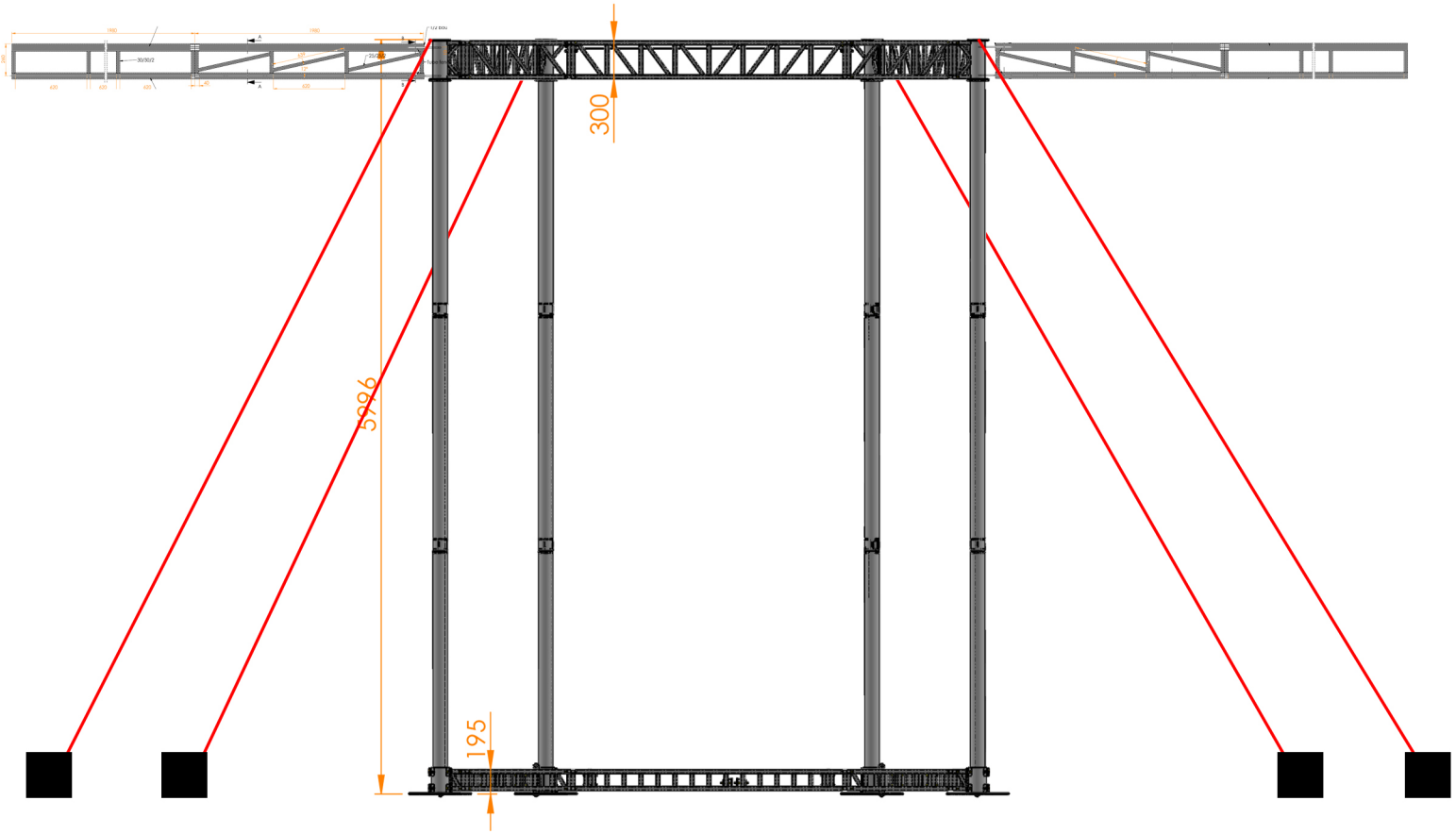
STEP 4: Repeat step 3 for the 2nd and 3rd sleeves of the 4 poles

STEP 5: Set-up of the platform

The platform is set-up on the floor once the structure has been lifted. The weight of the platform is not supported by the pipe grid. The total weight supported by the pipe grid is 400 kg.



STEP 6: Rigging of the structure



The structure is rigged to 4 anchor points (slings + ratchet straps + span-sets provided by the Company). ☒The nature and location of the 4 anchor points must be determined in advance and in agreement with the Company General Manager.

The platform is lifted during the show by 4 motors (Stagemaker 250kg) provided by the Company.

The power supply of the motor control (located on the stage) is 32A three-phase. The power should be located at stage right.

LIGHT

The Light Technician comes with his own laptop and ENTECC DMX box (1 Universe).
No console is needed.

The lighting plans for the grid and the floor are attached at the end of this technical rider.
They are likely to be slightly modified by the Company Light Technician. Updated plans will be sent by the Light technician as soon as possible.

80 channels 3kW (59 on grid / 16 on floor).

REQUIRED MATERIALS (IDEALLY) :

6 profiles 2kW type Robert Juliat 714SX
14 Profiles 1kW type Robert Juliat 613SX
4 Profiles 1kW type 614SX
1 PC 2kW
9 PC 1kW
29 PARS 64 CP62
10 PARS 64 CP61
7 PARS Led RGBW + Zoom
4 ACP

13 Floor stands
6 Tripods (H=2m)

The company provides :
3 funstrips (please provide 3 points DMX to connect them).
1 Blinder

A DMX 5 points input is required at the top of our structure (see plan attached).

VIDEO

The Company comes with its own Video Projector (Christie D12WUH-12000 Lumens) + Shutter DMX.

- ☐ The video is controlled by the Sound Technician (video computer in control desk)
- ☐ We ideally place the projector at the control desk, however, if this is not possible, the company can provide an HDMI to SDI + 100m 3G SDI cable. Please inform the Company General Manager in advance to ensure that these elements are included.

SOUND

The Sound Technician will come with their laptop and sound-card.

Material required:

Front field adapted to the dimensions of the venue.

4 monitors X15HIQ, MTD 115 or equivalent on stage

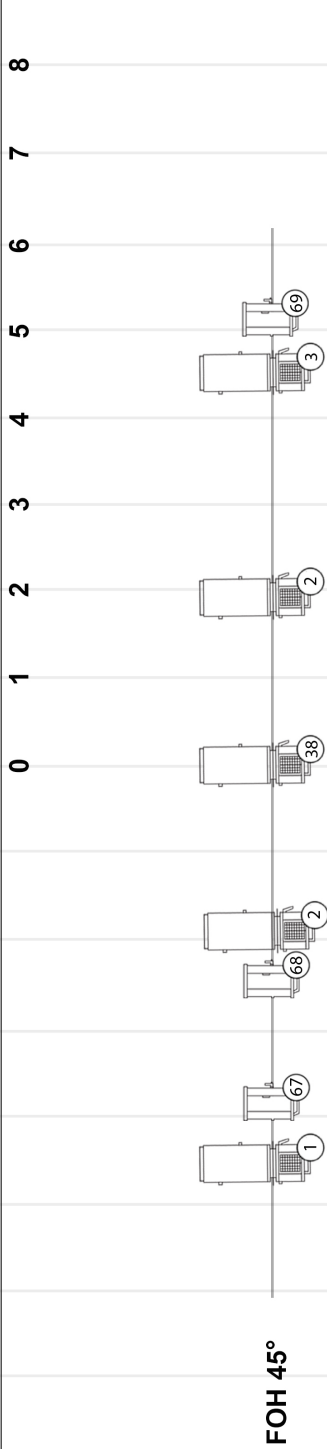
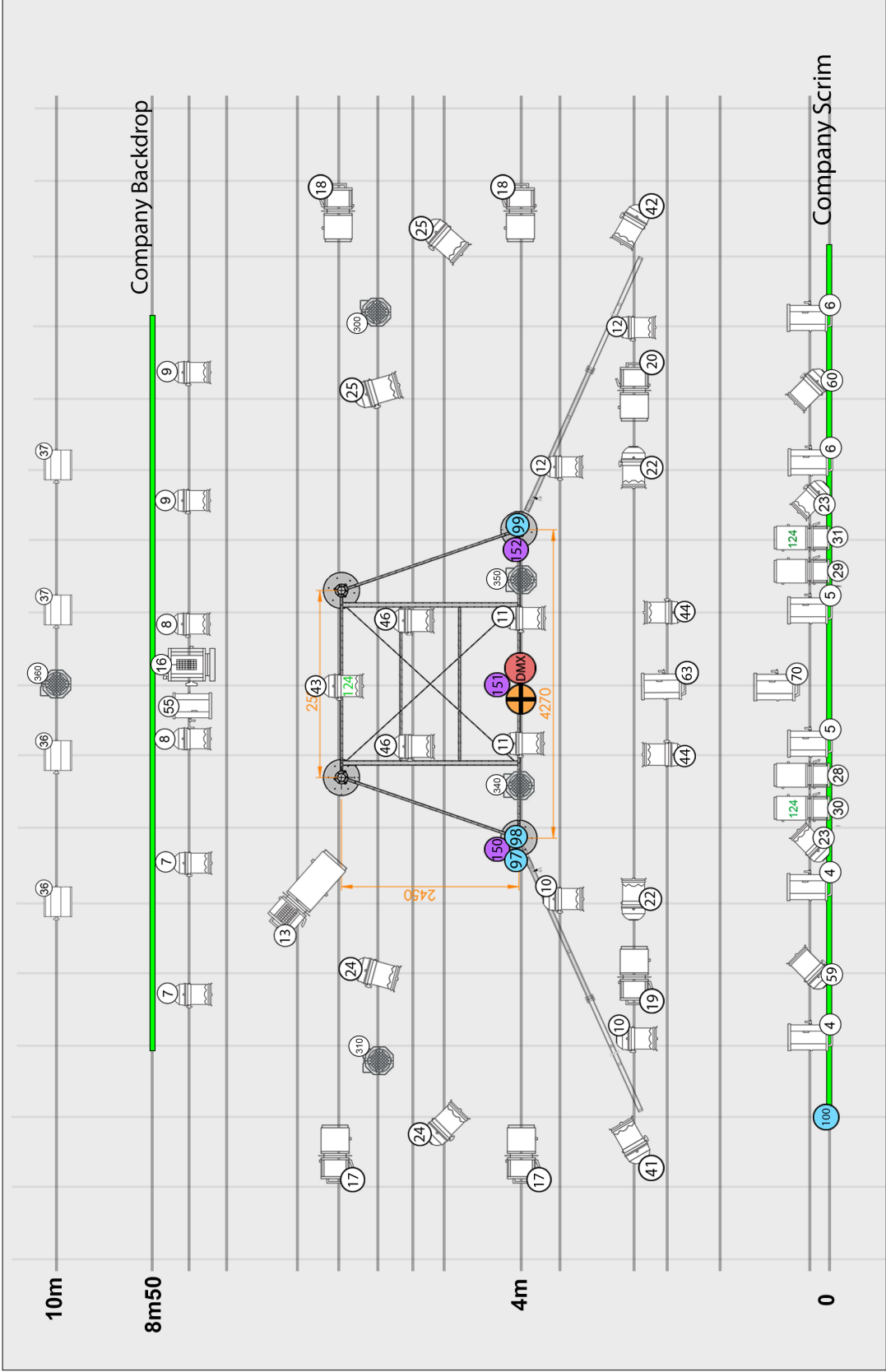
6 microphones KM184

1 mixing console Yamaha Série CL or QL (Minimum 6 analogic inputs available at the control desk)

GRID LIGHT PLAN / CIRQUE LE ROUX / A DEER IN THE HEADLIGHTS

74 Channels 3kW (59 on grid / 15 on floor)

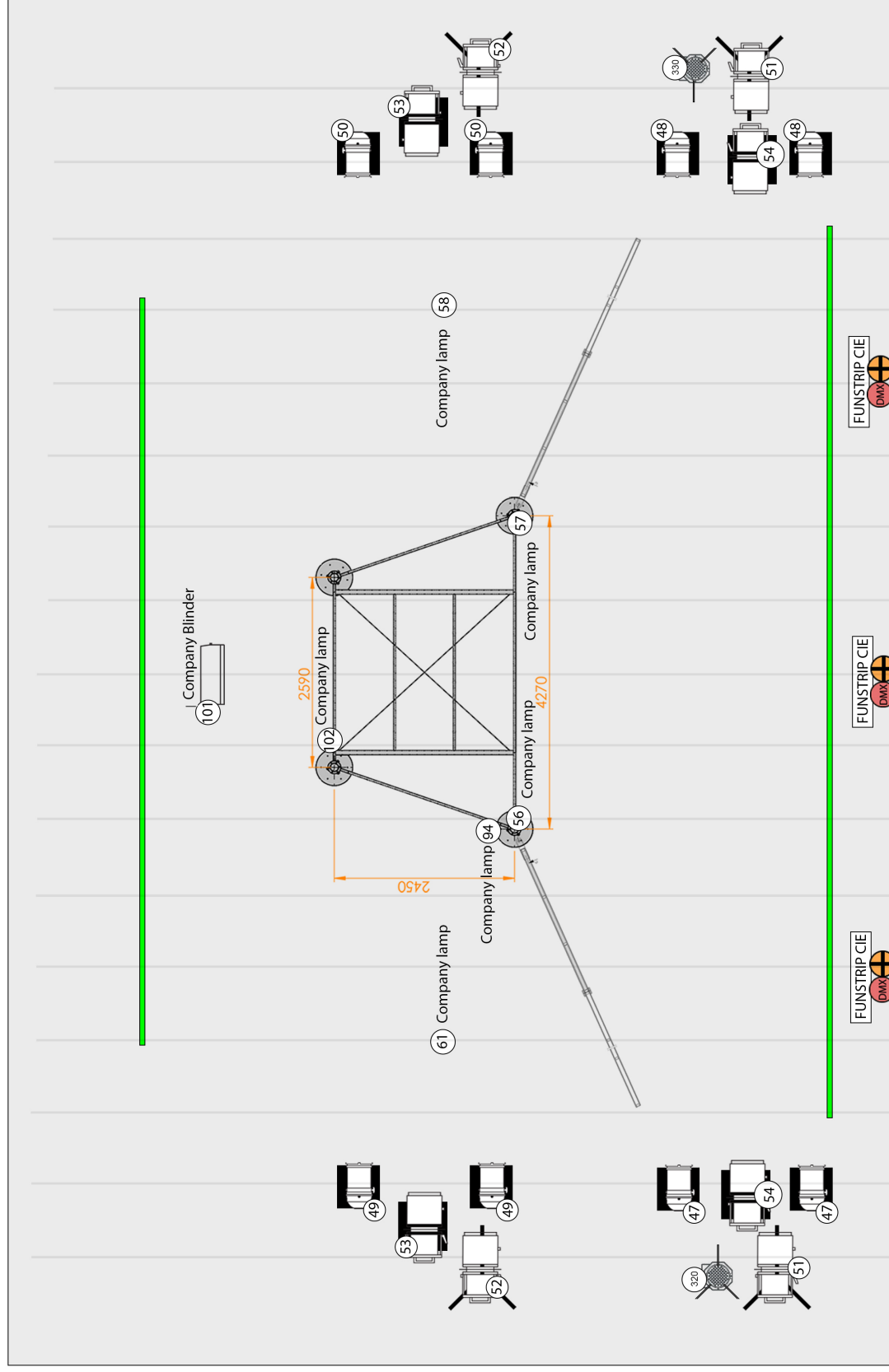
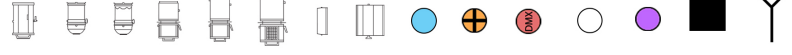
- PC 1kW (x19)
- PARCANS CP61 (x10)
- PARCANS CP62 (x29)
- PROFILE 1KW TYPE 613SX (x12)
- PROFILE 1KW TYPE 614SX (x4)
- PROFILE 2KW TYPE 714SX (x7)
- BLINDER CIE
- ACP (x4)
- CHANNELS FOR THE COMPANY
ELECTRO-MAGNETIC SUCKERS
- DIRECT 220V
- 5 POINTS DMX INPUT
- CHANNEL NUMBER
- MOTOR CHANNELS FOR THE COMPANY
SCENERY BLIND



FOH 45°

FLOOR LIGHT PLAN / CIRQUE LE ROUX / A DEER IN THE HEADLIGHTS

74 Channels 3kW (59 on grid / 15 on floor)



STAGE PLAN / CIRQUE LE ROUX / LA NUIT DU CERF

The mapping of the anchor points serves to give an idea of the optimal rigging of the structure. These points can move. The Company General Manager will provide a plan with the location of these anchoring points.

